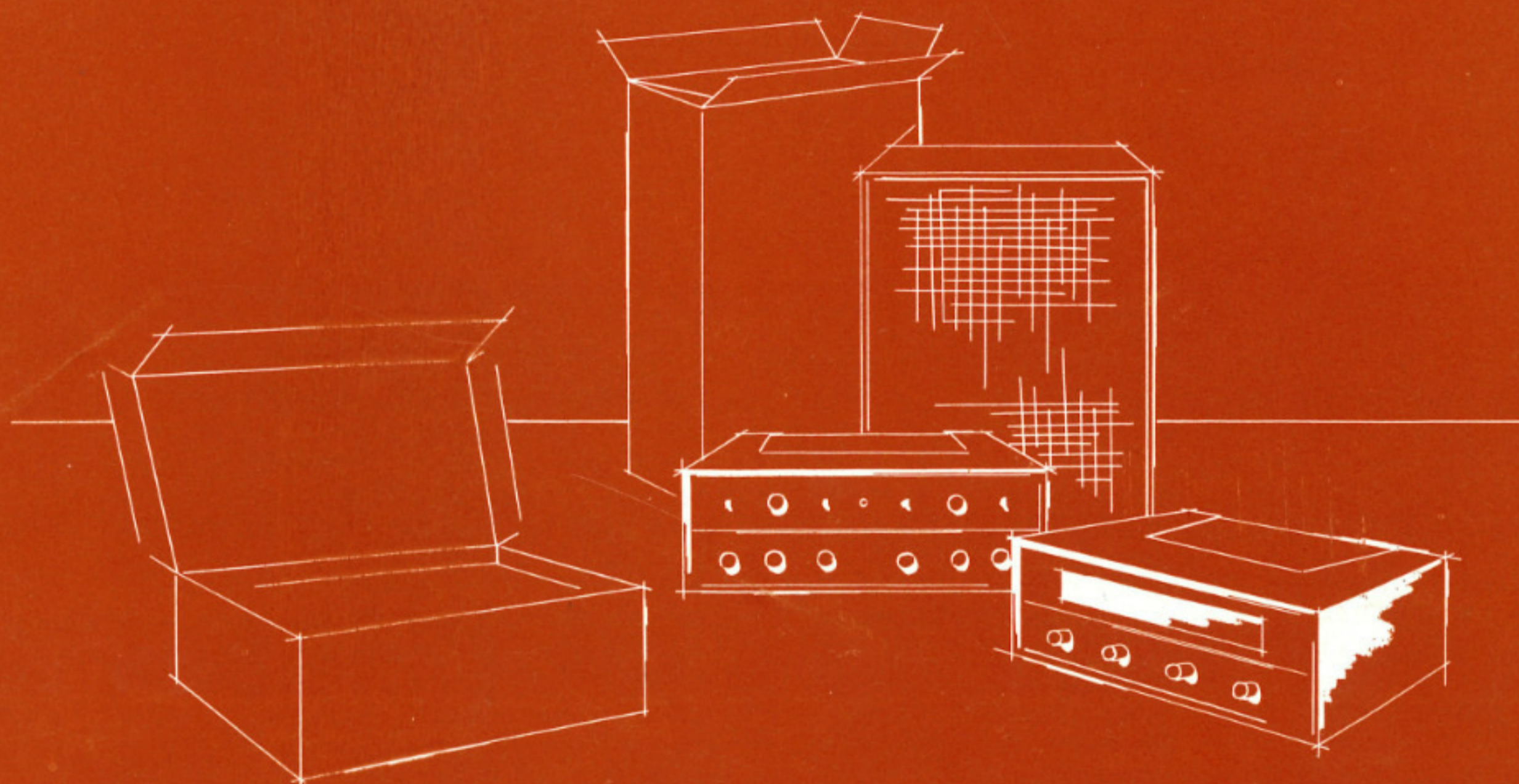




THE
FISHER

STRATAKITS



Downloaded from averysfisher.com

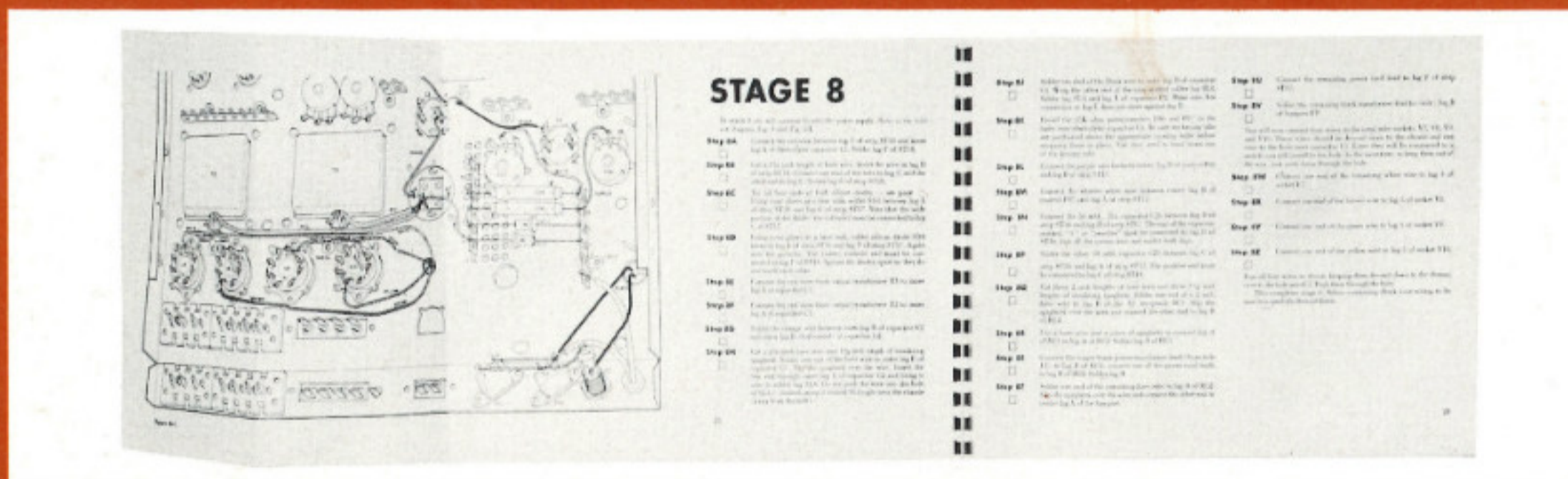
IN OUR TWENTY-FIFTH YEAR OF HIGH FIDELITY LEADERSHIP



FOR OUTSTANDING VALUE AND TOP PERFORMANCE — BUILD FISHER HIGH FIDELITY STRATAKITS

■ Before Fisher Radio Corporation could stake its reputation on a product completed by the purchaser, two requirements had to be *unconditionally* satisfied. **FIRST**, the performance of such a FISHER component had to meet the same rigid laboratory-quality standards established for FISHER production line units, no matter who assembled it. **SECOND**, constructing the kit had to be a pleasure, not a problem.

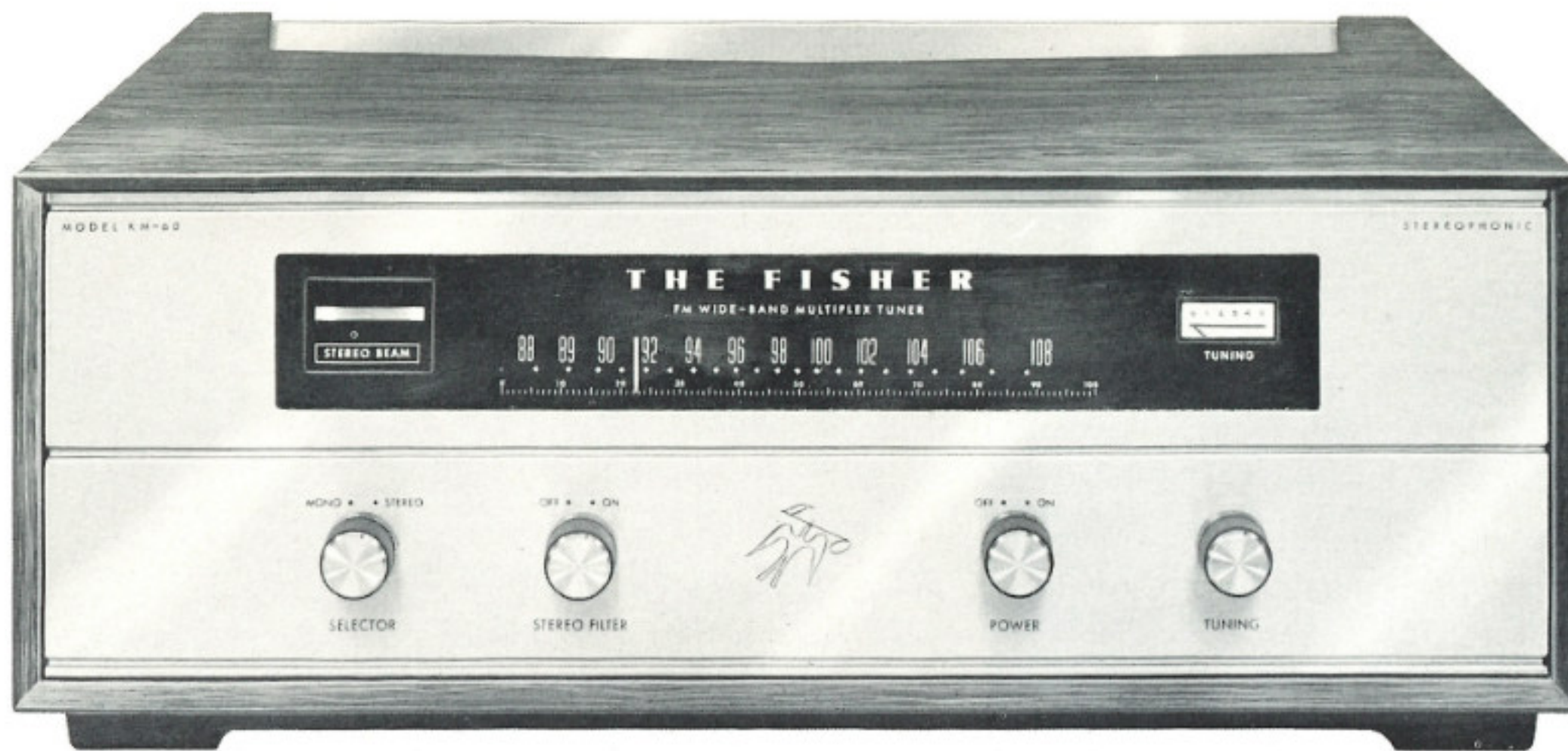
FISHER engineers have responded to both of these challenges brilliantly, as will be evident to any builder of FISHER STRATAKITS. Furthermore, the STRATAKIT builder will find himself the owner of the finest high fidelity component, whether it is an FM Stereo Tuner, Stereo Master Control Amplifier or a Loudspeaker System, and at substantial savings.



EASIEST TO BUILD

■ You do not need technical knowledge, special skills or a workbench full of tools to build a FISHER STRATAKIT. The STRATAKIT method of construction permits assembly by easy, error-proof stages (STRATA), each stage corresponding to a specific, illustrated page in the Instruction Manual and to a separate, clearly identified transparent packet of parts. Large, three-dimensional diagrams guide you *every step of the way*. Just perform the numbered step and check it off. Errors of omission, if any, can thus be checked stage-by-stage and page-by-page before proceeding to the next stage. It's that simple with a FISHER STRATAKIT. Major components come already mounted on the chassis, and wires are pre-cut to length and pre-stripped for every stage. Schematic diagrams are also included for those who like to see how the various electronic circuits are designed.

The FISHER STRATAKIT Stereo Master Control Amplifier and FM Stereo Tuner have the same distinctive styling and magnificent brass-finish front panel as the FISHER factory-wired components and may be housed in the standard FISHER custom cabinets.



THE FISHER KM-60 STRATAKIT

FM-Stereo-Multiplex Wide-Band Tuner With Exclusive Stereo Beam

OUTSTANDING FEATURES

GREATEST SENSITIVITY OF ANY TUNER KIT

The extremely wide-band design, coupled with advanced multiplex circuitry and the ultra-sensitive Golden Cascade Front-End, assure the clearest and most reliable reception possible even from weak signals or distant stations.

FISHER STEREO BEAM—ALWAYS IN OPERATION

This ingenious FISHER invention instantly indicates whether or not the FM station is broadcasting in stereo. Makes Multiplex a pleasure, not a problem. *Only FISHER has it!*

A PRECISION D'ARSONVAL METER FOR TUNING AND ALIGNMENT

This dual-purpose meter is switchable for micro-accurate tuning or easy, fool-proof alignment of the IF and ratio detector sections.

FM-STEREO SUB-CARRIER FILTER

This highly effective filter suppresses noise on the sub-carrier when reception conditions are poor (weak signals or fringe areas) without affecting the frequency response of the signal.

PRE-ALIGNED FRONT-END AND MULTIPLEX SECTION

These two critical sections of the KM-60 tuner are factory aligned and tested, and mounted on the chassis. No electronic instruments for alignment are necessary.

FOUR IF STAGES AND TWO LIMITERS

The four IF stages and two limiters assure enjoyable, distortion-free reception to a degree never before attained in any tuner kit.

TECHNICAL SPECIFICATIONS

- Sensitivity: 0.6 microvolts (20 db quieting with 72-ohm antenna,) 1.8 microvolts, IHFM standard.
- Signal To Noise Ratio: 70 db (at 100% modulation.)
- Selectivity: 60 db (alternate channel.)
- Capture Ratio: 2.5 db (IHFM standard.)
- FM Harmonic Distortion: Less than 0.5% (400 cps, 100% modulated.)
- Audio Frequency Response: Uniform, ± 1 db, 20-15,000 cps (after de-emphasis.)
- Rated Output Voltage: 2.0 volts.
- Eleven Tubes. Twelve Diodes. Selenium Rectifier.
- Dimensions: 15 $\frac{1}{8}$ " wide, 4 $\frac{13}{16}$ " high, 13" deep.
- Shipping Weight: 18 pounds.
- Wood Cabinets available in Walnut (Model 10-UW), Mahogany (Model 10-UM), Metal Cabinet in simulated leather, Model MC-2.

Downloaded from averyfisher.com

**See for yourself how easy it is to build
a FISHER High Fidelity STRATAKIT Component—
write for your free sample
assembly instruction page now!**

FISHER RADIO CORPORATION
STRATAKIT DIVISION, Dept. SP.
21-21 44th DRIVE
LONG ISLAND CITY 1, NEW YORK



THE FISHER KX-200

STRATAKIT

80-WATT STEREO MASTER CONTROL AMPLIFIER

OUTSTANDING FEATURES

EXCLUSIVE 80 WATTS MUSIC POWER

The Fisher KX-200 is the most powerful of all stereo control amplifier kits. It will drive even the lowest-efficiency speaker systems to their maximum performance levels.

EXCLUSIVE BUILT-IN D'ARSONVAL METER

This precision, laboratory-type calibration meter permits accurate adjustment for peak performance. Optimum results are thus guaranteed from the start *and* in the years ahead.

EXCLUSIVE CENTER-CHANNEL OR REMOTE SPEAKER FACILITIES

A special power output is provided for a center channel or remote speaker. *An additional amplifier is not required.* Such a speaker can be controlled independently, from the front control panel of the KX-200.

FULL-WAVE SILICON RECTIFIER POWER SUPPLY

DC voltage is provided for operation of *all* voltage amplifier heaters, not merely for the pre-amplifier heaters.

TOTAL RANGE DIMENSION CONTROL

Any degree of separation may be obtained from a maximum stereophonic to a monophonic signal.

EQUALIZATION SWITCH AND DUAL-MAGNETIC INPUTS

These inputs permit connection of two magnetic cartridges, two tape heads, or one magnetic cartridge and one tape head.

TOTAL FLEXIBILITY CONTROL SYSTEM

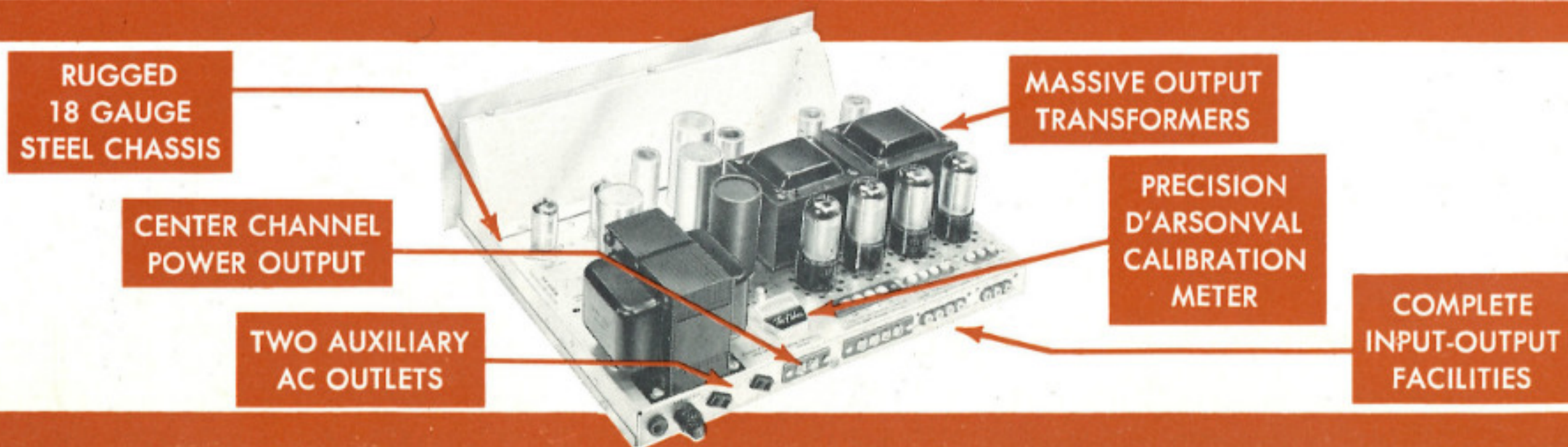
Tape monitor facilities, dual bass and treble controls, loud-

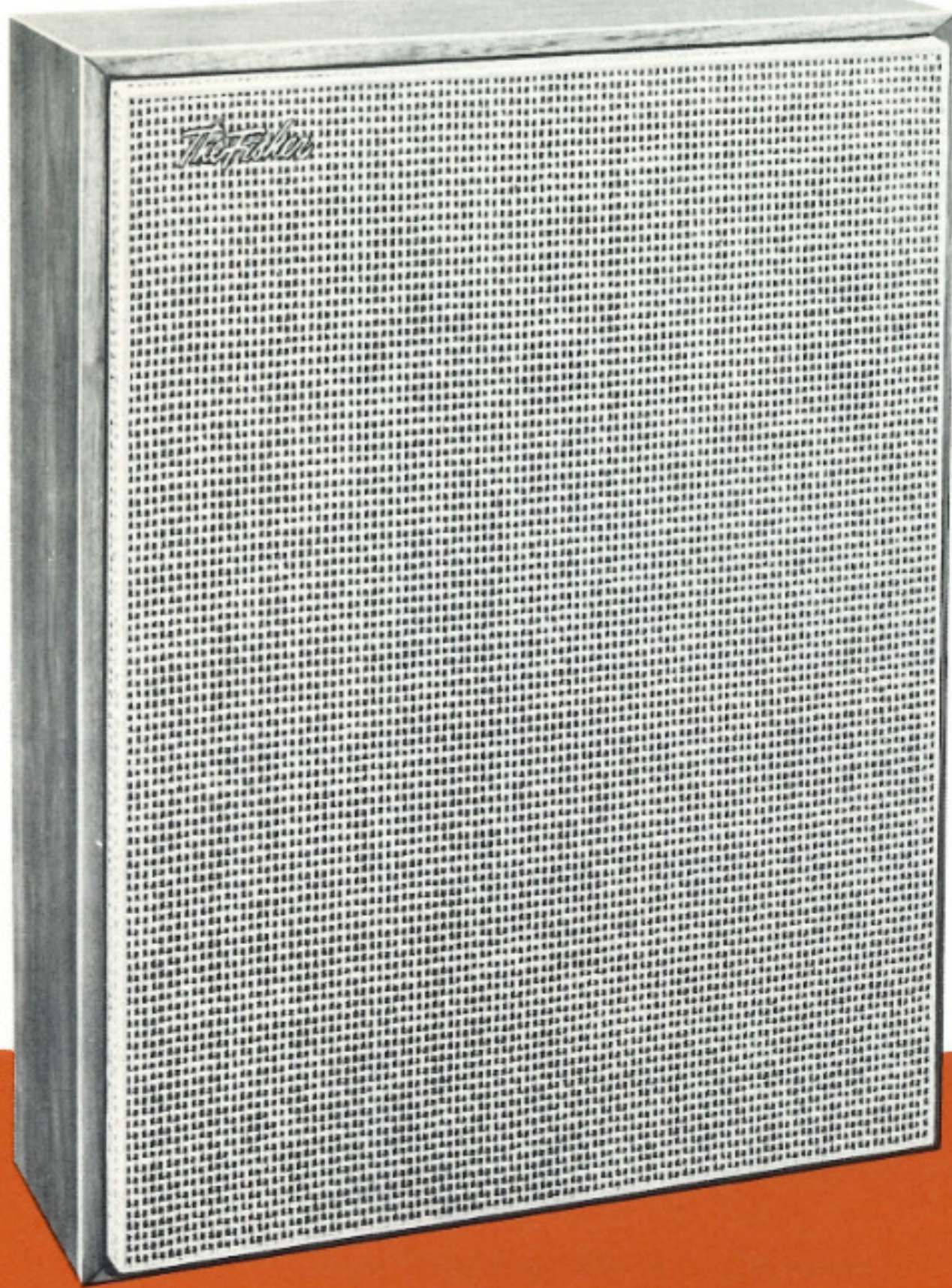
ness contour and high frequency filter switches, plus a host of other refinements, assure ease of operation and full enjoyment of the musical program.

TECHNICAL SPECIFICATIONS

- Music Power Output: 80 watts (IHFM Standard, both channels.)
- Harmonic Distortion: 0.4% (at rated output.)
- Frequency Response: Uniform 20-20,000 cps \pm 1 db. Power Amplifier Section: 10-110,000 cps, +0, -1 db.
- Total Hum and Noise: High Level Inputs, 80 db (450 mv ref.); Low Level Inputs, 66 db (6 mv ref.)
- Input Sensitivity: High Level, 350 mv; Low Level, 3.5 mv.
- Feedback Factor: 22 db.
- Damping Factor: 10
- Bass Control Range: 30 db total (at 50 cps.)
- Treble Control Range: 32 db total (at 10 kc.)
- Output Impedance: 4, 8, 16 ohms (each channel)
- Dimensions: 15 $\frac{1}{8}$ " wide, 4 $\frac{13}{16}$ " high, 12 $\frac{1}{2}$ " deep.
- Shipping Weight: 26 pounds.
- Wood Cabinets available in Walnut (Model 10-UW), Mahogany (Model 10-UM), Metal Cabinet in simulated leather, Model MC-2.

Downloaded from averyfisher.com





THE FISHER KS-1

STRATAKIT

SLIM-LINE SPEAKER

The FISHER Model KS-1 Slim-Line Loudspeaker System uses the most advanced components and is engineered for unequalled sound. The unstrained transparent quality of the FISHER Slim-Line Speakers is instantly apparent. Extreme clarity, precise transients, full and rich texture—these are of a calibre truly unprecedented in a system of this size and cost.

The FISHER Slim-Line Speaker System lends itself to virtually any type of installation. It can be mounted on a wall or placed on the floor or in a bookshelf, without any degradation in bass response. The cabinet can be stained or painted as desired.

This new FISHER Speaker System is also available as a factory-assembled unit in finished-sanded birch or oiled walnut, and is supplied with legs as well as wall-mounting accessories.

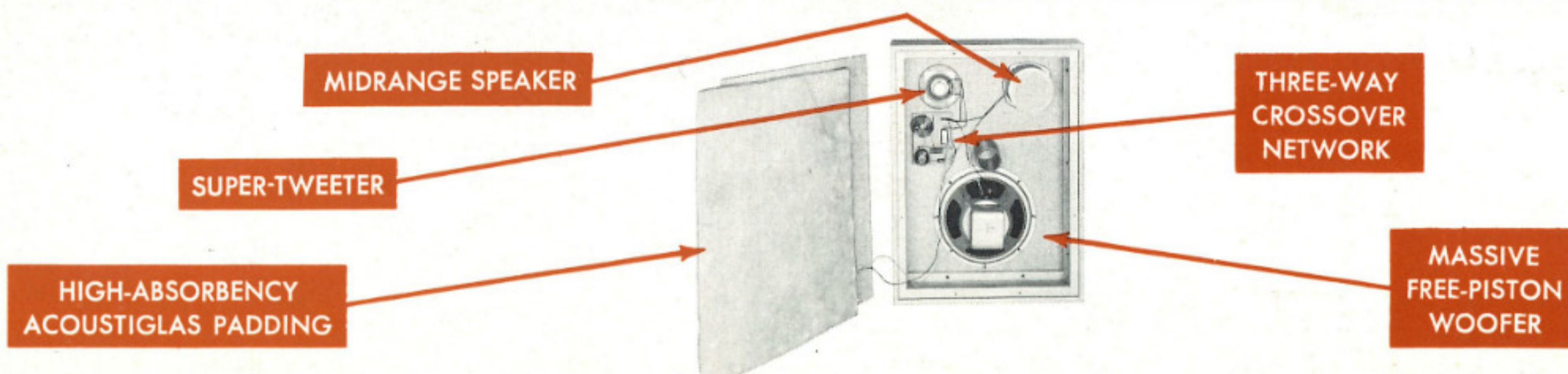
The attractive durable plastic grill cloth comes in neutral color which will match any room decor.

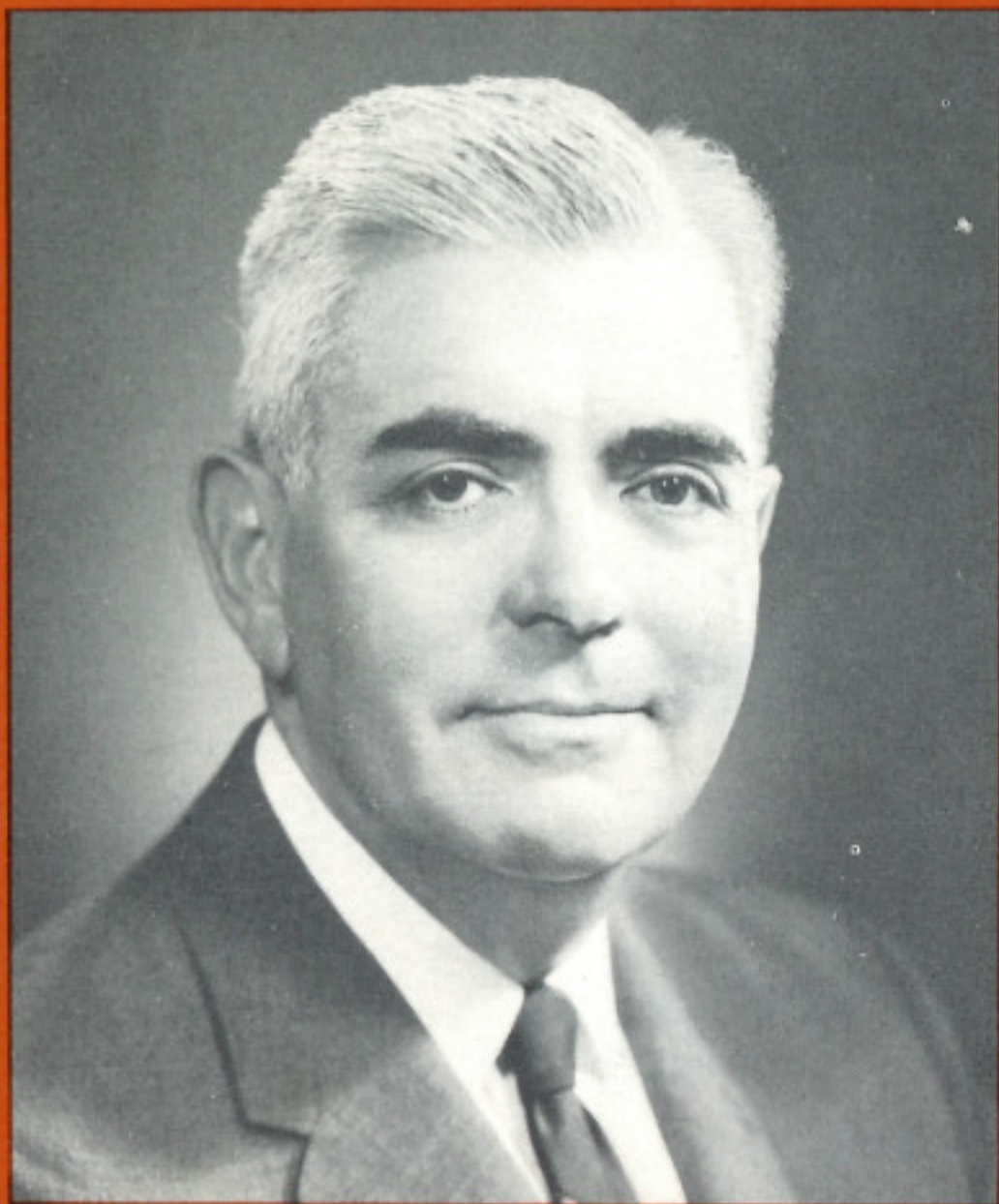
TECHNICAL SPECIFICATIONS

- Speaker Complement: 10-inch free-piston woofer with 30 cps free-air resonance and 4½-pounds magnet structure; 5-inch AcoustiGlas packed midrange unit; 3-inch super-tweeter. All speakers are *accurately balanced* at the factory for over-all smoothness of response.
- Frequency Response: 40 cps to 18,500 cps.
- Power: Only 10 watts required to achieve full room level (can safely handle 60 watts).
- LC-type crossover network with heavy air-core coils. Crossover frequencies: 1400 and 5000 cps.
- Impedance: 8 ohms.
- Cabinets are supplied with AcoustiGlas padding to eliminate resonance and parasitic vibration.
- Cabinets in birch or walnut, finished-sanded, ready for painting or staining. Styled to harmonize with any room decor.
- Dimensions: 18" wide, 24" high, only 5¾" deep.
- Shipping Weight: 26 pounds.

THE ONLY SLIM-LINE SPEAKER IN KIT FORM!

Downloaded from averysfisher.com





Avery Fisher
Founder and President
Fisher Radio Corporation

A Message From Avery Fisher

■ It is now twenty-five years since we made and delivered our first instrument for high fidelity reproduction of radio and records. (That instrument is now in the Smithsonian Institution, Washington, D.C.) Beginning with that first unit, it has been our unflinching policy to manufacture only the very best of equipment, and to bring it within the reach of the widest possible audience.

The Fisher STRATAKITS illustrated in this folder represent the efforts of the finest single group of engineers in the high fidelity industry. Our entire approach to the problem of designing kits was based on two simple rules. The first was that the quality must in every particular be on a complete par with the finest comparable Fisher equipment, as built in our own Production Department. The second was that the method of assembly must be so thoroughly simplified and organized that even the most unskilled purchaser could expect a perfect end result. No effort has been spared to achieve these two objectives. I know that the building of these kits will bring you a sense of accomplishment based on the pleasure of creating something fine, and on the knowledge that here is an investment that will bring virtually unnumbered years of musical enjoyment to you and your family.

Downloaded from averyfisher.com

T W E N T Y - A C R E F I S H E R P A R K • M I L R O Y , P E N N S Y L V A N I A

